



Farm Retirement

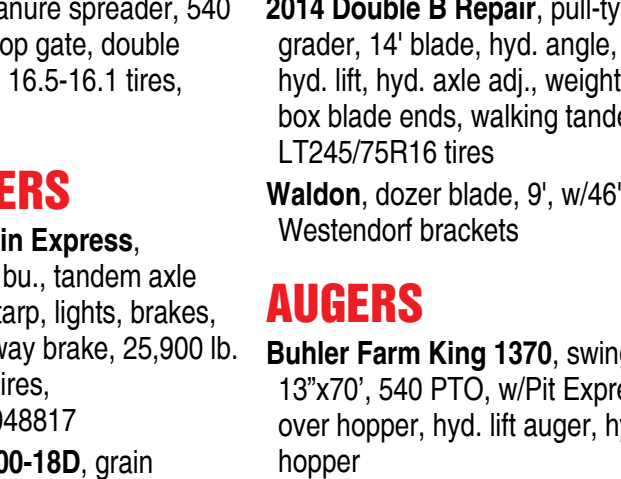
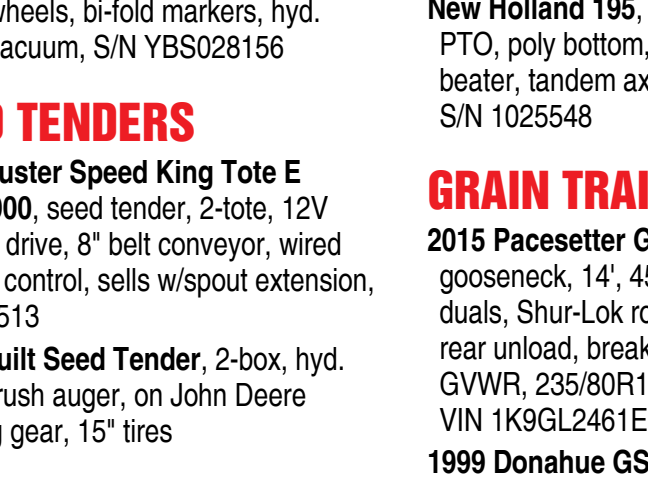
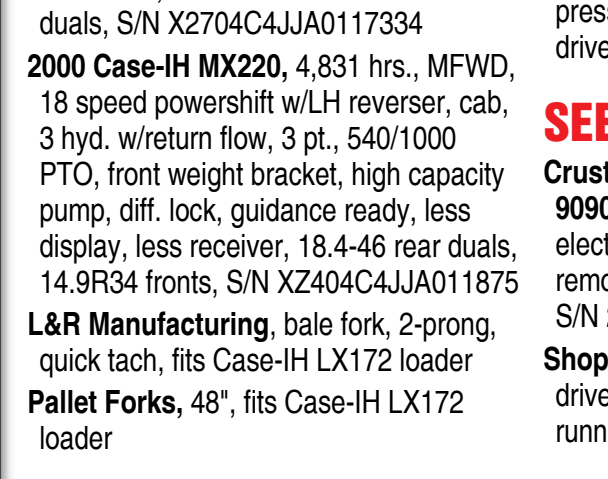
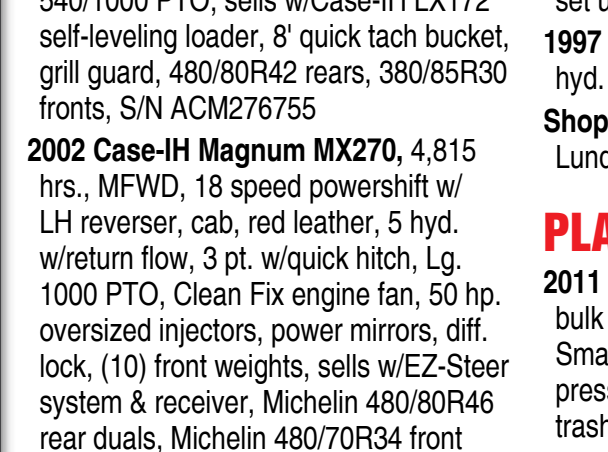
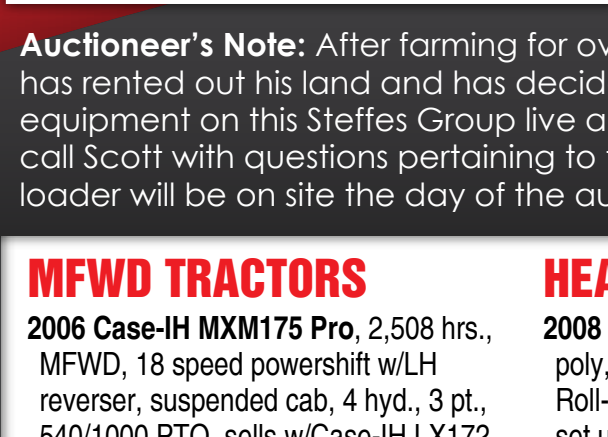
AUCTION



Built on Trust.

Auction held onsite at 2081 380th Avenue, Goose Lake, IA 52750

WEDNESDAY, AUGUST 26, 2020 AT 10AM



Auctioneer's Note: After farming for over 38 years, Scott has rented out his land and has decided to sell his line of equipment on this Steffes Group live auction event. Feel free to call Scott with questions pertaining to the equipment. Steffes loader will be on site the day of the auction to assist in loading.

MFWD TRACTORS

2006 Case-IH MXM175 Pro, 2,508 hrs., MFWD, 18 speed powershift w/LH reverser, suspended cab, 4 hyd., 3 pt., 540/1000 PTO, sells w/Case-IH LX172 self-leveling loader, 8' quick tach bucket, grill guard, 480/80R42 rears, 380/85R30 fronts, S/N ACM276755

2002 Case-IH Magnum MX270, 4,815 hrs., MFWD, 18 speed powershift w/LH reverser, cab, red leather, 5 hyd. w/return flow, 3 pt. w/quick hitch, Lg. 1000 PTO, Clean Fix engine fan, 50 hp. oversized injectors, power mirrors, diff. lock, (10) front weights, sells w/EZ-Steer system & receiver, Michelin 480/80R46 rear duals, Michelin 480/70R34 front duals, S/N X2704C4JJA0117334

2000 Case-IH MX220, 4,831 hrs., MFWD, 18 speed powershift w/LH reverser, cab, 3 hyd. w/return flow, 3 pt., 540/1000 PTO, front weight bracket, high capacity pump, diff. lock, guidance ready, less display, less receiver, 18.4-46 rear duals, 14.9R34 fronts, S/N XZ404C4JJA011875

L&R Manufacturing, bale fork, 2-prong, quick tach, fits Case-IH LX172 loader
Pallet Forks, 48", fits Case-IH LX172 loader

2WD TRACTORS

1999 New Holland TS100, 4,253 hrs., 2WD, 12 speed, 100 hp., ROPS, open station, 2 hyd., 3 pt., 540/1000 PTO, front weight bracket, 18.4-30 rears, 10-16SL fronts, S/N 108748B618220

1989 Massey Ferguson 390T, 4,014 hrs., 2WD, 12 speed, open station, 2 hyd., 3 pt., 540 PTO, rear fenders, 18.4-30 rears, S/N 5723_P45030

SKID STEER

2001 Case 75XT, 2,052 hrs., skid steer, diesel, ROPS, plexiglass sides, aux. hyd., hand controls, sells w/80" high capacity bucket, 12.5-16 tires, S/N JAF0318350

Quick Attach, pallet forks, 42", skid steer mount

COMBINE

1999 Case-IH 2366 Axial-Flow, 2,423 sep./3,333 eng. hrs., 2WD, specialty rotor, Field Tracker, single speed feeder house w/electric reverser, rock trap, chopper/spreader, Y&M, less display, Cray Big Top hopper extensions, 18" unload auger, (8) rear suitcase weights, 24.5-32 fronts, 14.9-24 rears, S/N JJC0252555 (floatier tires sell separate)

(2) Trelleborg TM2000, 900/60R32 floatier tires & rims, fit Case-IH 2366

HEADS

2008 Drago N6, corn head, 6x30", red poly, auto adj. deck plates, knife rolls, Roll-A-Cones, head height sensors, set up for Case-IH 2366, S/N 21768

1997 Case-IH 1020, flex head, 25", hyd. fore/aft, S/N JJC0220276

Shop-Built, head trailer, 30", on Lundell running gear, 225/70R15 tires

PLANTER

2011 Case-IH 1250 Early Riser, bulk fill planter, 12x30", 2 pt., liquid, Smart Box system, pneumatic down pressure, row clutches, (2) rows each, trash wheels, double disc openers, 6" press wheels, bi-fold markers, hyd. drive, vacuum, S/N YBS028156

SEED TENDERS

Crust Buster Speed King Tote E 90906900, seed tender, 2-tote, 12V electric drive, 8" belt conveyor, wired remote control, sells w/spout extension, S/N 25513

Shop-Built Seed Tender, 2-box, hyd. drive brush auger, on John Deere running gear, 15" tires

SPRAYERS

Hardi 1000 Navigator, pull-type sprayer, 90' boom, 1,000 gal., 15" spacing, 3-body nozzles, chemical inductor, rinse tank, foam markers, hyd. fold, hyd. level, hyd. tilt booms, 1000 PTO, 13.6-38 tires, S/N 9887

FS, UTV mounted sprayer, self-contained, 100 gal., poly tank, Honda GX120 gas engine, 10' boom, boomless nozzles & hand wand w/hose reel, fold forward hand controls

TILLAGE

2012 Great Plains 2400TM Turbo-Max, vertical tillage, 24', pull-type, wing fold, 20" disc blades on 8" centers, rolling star wheels, rolling basket leveler, tandems across, S/N GP-C2420H

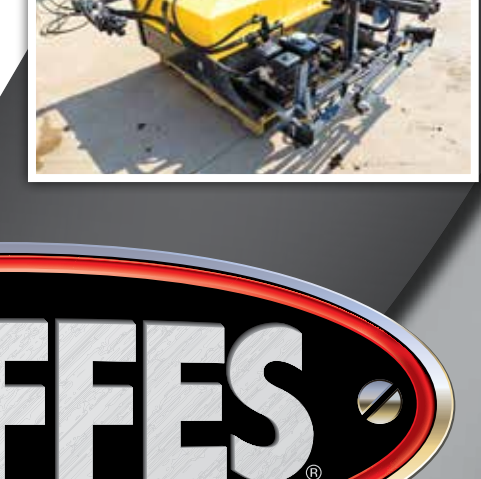
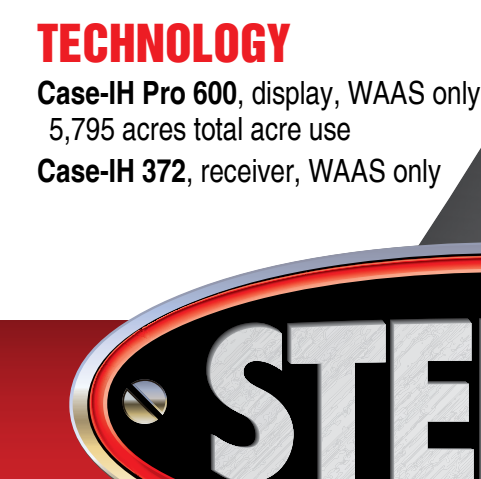
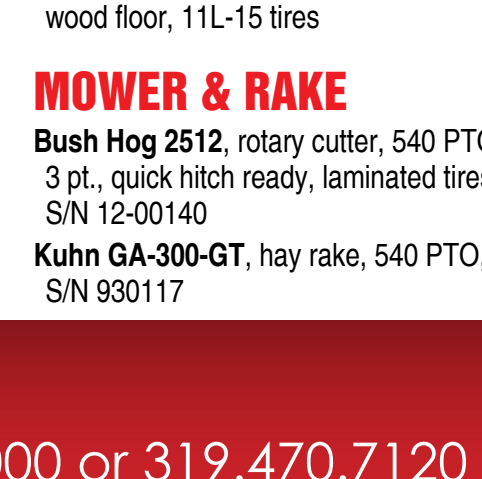
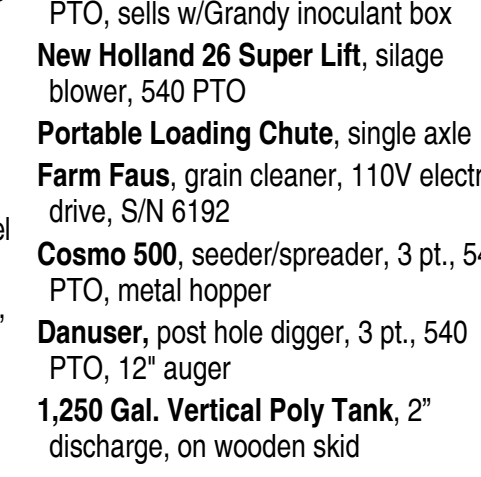
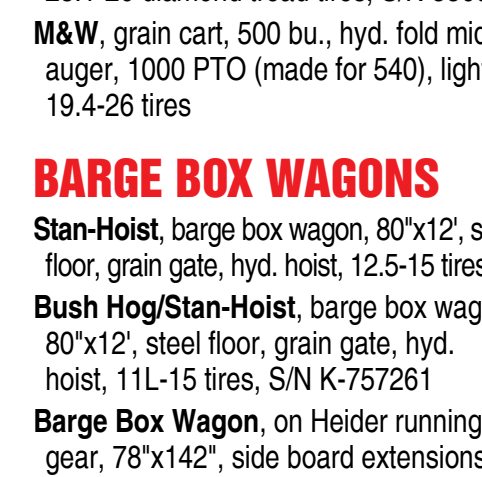
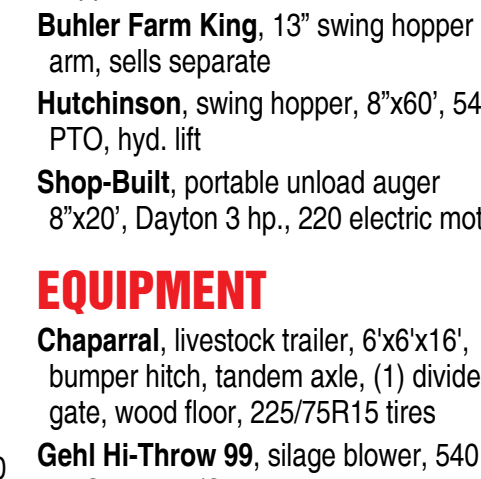
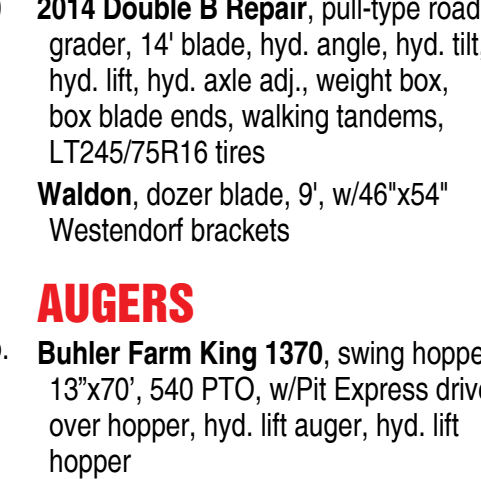
Landoll 2327-5-30 Weather Proofer II, disc ripper, 5-shank, pull-type, 21" disc blades on 12-1/2" centers, spring reset, manual adj. front disc gangs, Landoll rolling chopper, walking tandems, S/N 22D0901063

McFarlane HDT-26, harrow, 26', pull-type, wing fold, gauge wheels

Sukup 4200, row crop cultivator, 12x30", 3 pt., wing fold, 19" sweeps

Auto Guide, 3 pt. guidance attachment, sells w/control box

Pittsburgh, plow, 5-bottom, 16", semi-mount



ONLINE BIDDING AVAILABLE



More photos on reverse side!

Mohr Farmstead Corp., Scott Mohr – 563.613.0072

For information contact Terry Hoenig at Steffes Group, 319.385.2000 or 319.470.7120

SteffesGroup.com

Steffes Group, Inc., 2245 East Bluegrass Road, Mt. Pleasant, IA 52641 | 319.385.2000





Steffes Group, Inc.
2245 East Bluegrass Rd
Mt. Pleasant, IA 52641



FARM RETIREMENT AUCTION
WEDNESDAY, AUGUST 26, 2020 AT 10AM



PRESORTED
MARKETING
US POSTAGE
PAID
Permit #315
FARGO, ND



Farm Retirement AUCTION

Auction held onsite at 2081 380th Avenue, Goose Lake, IA 52750

WEDNESDAY, AUGUST 26, 2020 AT 10AM



SteffesGroup.com

Steffes Group, Inc., 2245 East Bluegrass, Mt. Pleasant, IA 52641 | 319.385.2000

